

春 Spring



夏 Summer



秋 Fall



冬 Winter



Area attractions

Walk there! It's about 900 meters and a fifteen-minute walk from the Park Center to Miyagase Dam.

Use the tram and the cable car The tram will take you from the Park to the bottom of Miyagase Dam. You can then take the cable car up the incline (paid) or the elevator to get back to the top.

Take a pleasure cruise around Miyagase Lake Tour boats will take you from the top of the dam to the Miyagase Park and Toriibara Park areas.



Miyagase Park area



Toriibara Park area



Miyagase Dam (discharge viewing area)



Getting here

By train/bus

- From Hon-Atsugi Station on the Odakyu Line, head out the North Exit and get on the bus bound for Hanbara via Yagai Center. Get off at the Aikawa Ohashi stop. It's about a 20-minute walk from there.
From the Mikagi Bus Terminal, get on the bus bound for Handa via Seki. Get off at the Ishigoya Iriguchi stop. It's about a 15-minute walk from there.

Note: To get to the Mikagi Bus Terminal, you can take a bus from Hashimoto Station on the JR Yokoyama Line or Keio Sagami Line, or from Sagami Line on the JR Chuo Main Line.

By car

- Parking for 744 passenger vehicles and 9 large vehicles
Parking fee: Free on weekdays (paid on Saturdays, Sundays, public holidays, and during Golden Week and the summer holidays)
Take the Tomei Expressway to Ebina JCT to get on the Ken-O Expressway. Take the Ken-O to the Sagami IC, getting off on Route 510. Take a left onto Route 412, then turn right at the Miyagase Dam Iriguchi intersection.

- Take the Chuo Expressway to Hachioji JCT to get on the Ken-O Expressway. Take the Ken-O to the Sagami IC, getting off on Route 510. Take a left onto Route 412, then turn right at the Miyagase Dam Iriguchi intersection.

Contact us

Aikawa Park Center, Miyagase Dam Area Promotional Foundation

5423 Hanbara, Aikawa-cho, Aiko-gun 243-0307
TEL : 046-281-3646
URL http://aikawa-park.jp

Craft Village

5423 Hanbara, Aikawa-cho, Aiko-gun 243-0307
TEL : 046-281-2438
URL:http://www.aikawa-park.jp/publics/index/21/

Urban Road Section, Atsugi Civil Engineering Office, Kanagawa

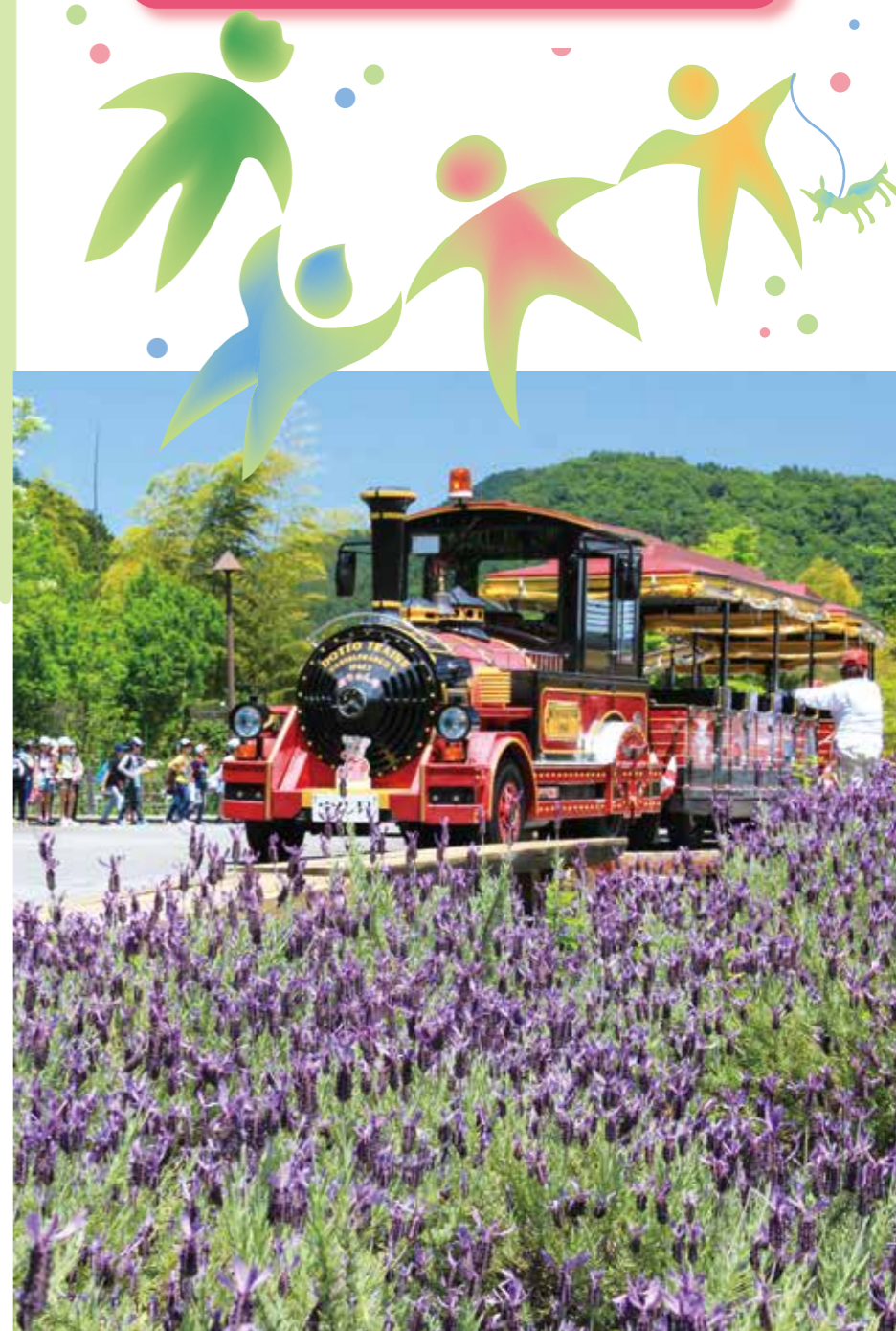
2-28 Tamura-cho, Atsugi 243-0016
TEL : 046-223-1711 (main line)



201903 ASCOT
English / 英語

Play in nature to your heart's content!

Aikawa Park



Located directly below the Miyagase Dam, this park offers endless opportunities to enjoy the water and fresh air!



Windy Hill A hill offering lovely views that stretch all the way to the Yokohama Landmark Tower on clear days.



Flower Slope Some forty varieties of azalea bloom along these slopes. Enjoy the park's nearly 44,000 azalea plants!



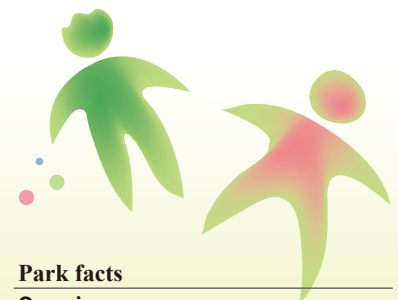
Adventure Forest

The Adventure Forest is one of the highlights of Aikawa Park, featuring fun playground equipment designed by children!

Azalea guide

Enjoy azaleas throughout the park, especially on the Flower Slope!

Mitsuba azalea	Japanese azalea
Royal azalea	'Haru-ichiban'
'Shintoko-natsu'	Cork azalea
'Chikushi-beni'	Yodogawa azalea
'Queen Maya'	'Kurenoyuki'
'Hakata-haku'	White enkianthus



Park facts

Overview
 Location : Hanbara, Aikawa-machi, Aiko-gun
 Park area : 51.8ha

Park Center
 Hours :
 8:30 AM-5:00 PM
 (April through September)
 8:30 AM-4:30 PM (October through March)
 Closed for the New Year holidays



Jabu-Jabu Pond
 This little pond has a depth of just 20 cm and is perfect for small children.



Aichan-go tram
 Service between the park and Miyagase Dam (paid)



Aikawa Local Museum
 This museum collects, houses, and displays documents and other artifacts related to the history of the town.



Aikawa Park Craft Village
 Facility offering hands-on craft experiences and light fare.



Park Center
 Stop by to get information on the park and surrounding areas.



Kids' play area / Fuwa-Fuwa Dome
 Bounce on an enormous inflatable trampoline!